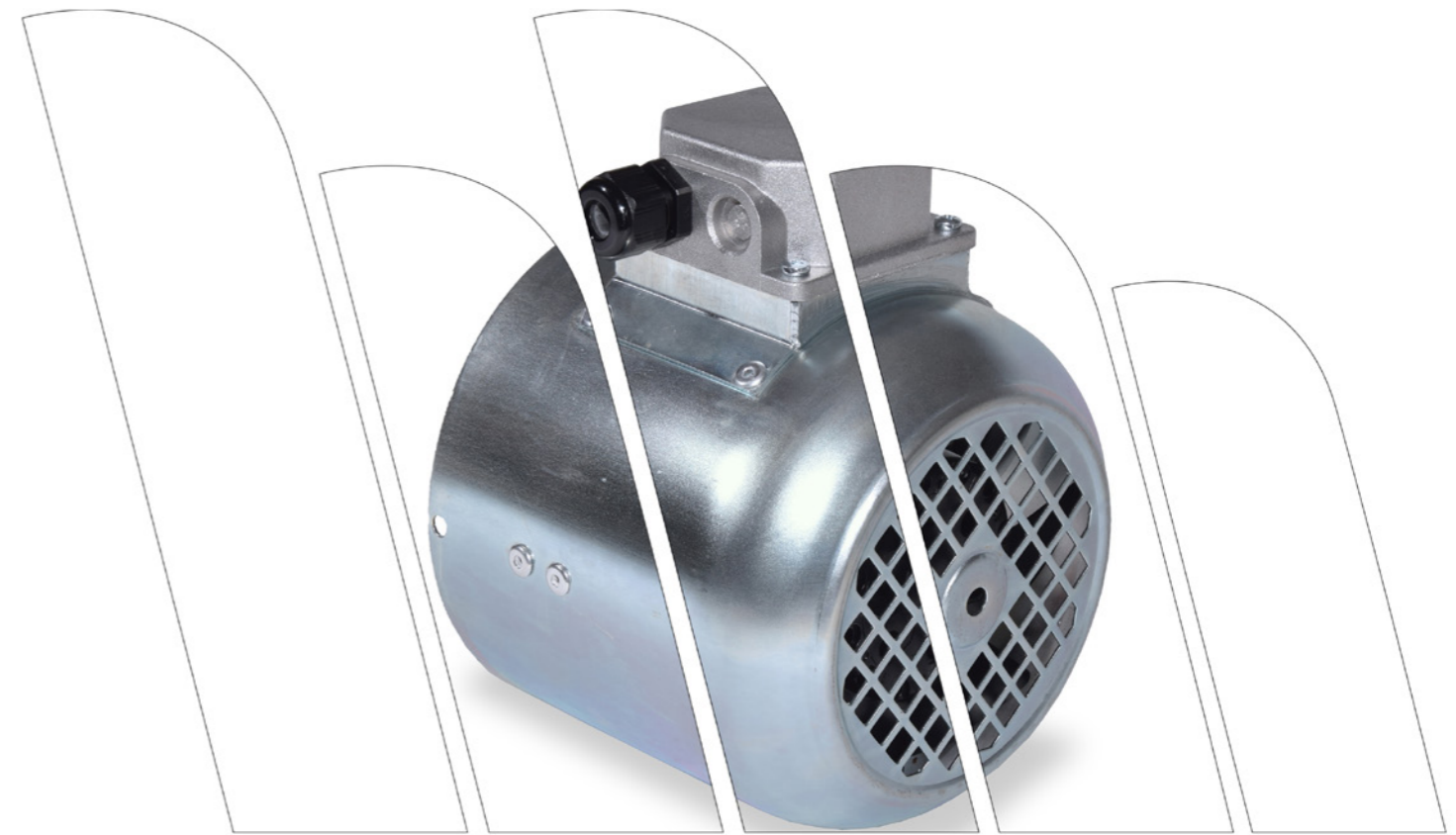




Made in Italy EU



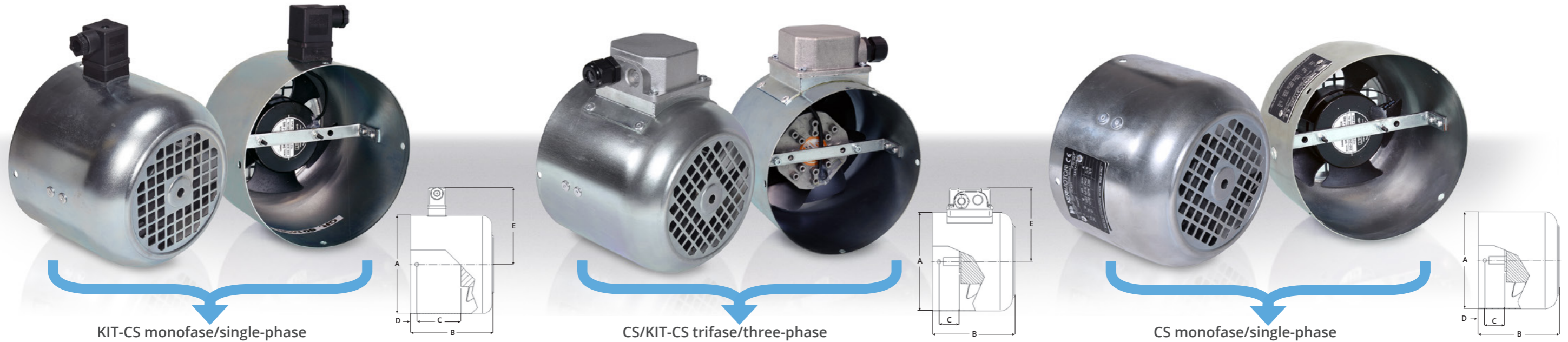
KIT VENTILAZIONE FORZATA - *FORCED VENTILATION KIT*



Legal Head Office: Via A. Fleming 6-8 | Operations & Logistics: Via A. Fleming, 10
40017 S. Giovanni in Persiceto (BO) Italy | Tel. +39 0516870911
info@nerimotori.com | www.nerimotori.com

REV.2 05/17
D-MRK-60_Brochure kit ventilazione forzata IT_EN





Tutti i vantaggi della ventilazione forzata in kit

Una nuova serie di versatili servoventilazioni in KIT di pronto montaggio che introduce notevoli vantaggi pratici rispetto al passato:

- possibilità di aggiungere la ventilazione forzata in un motore standard autoventilato esistente
- peso e dimensioni più ridotti nelle servoventilazioni trifase (senza motorino ma con elettroventola)
- semplicità di installazione (si smonta il copriventola e si sostituisce con il KIT-CS collegando solo 2 fili, anche nel trifase)

All the advantages of forced ventilation in kit form

A new series of versatile servo fans in ready-to-fit KIT form that introduces considerable practical advantages compared to the past:

- the option of adding forced ventilation to an existing standard self-ventilated motor
- reduced weight and smaller size for three-phase servo ventilation (no motor but with an electric fan)
- easy installation (just remove the fan cover and replace it with the KIT, just 2 wires to connect, even on the three-phase)

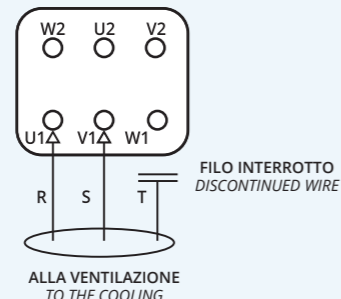
Configurazioni dei kit e prestazioni facilmente identificabili

Le versioni CS sono montate direttamente in azienda su motori ordinati con servoventilazione

Easily identified kit configurations and performance

The CS versions are assembled directly in the factory to motors ordered with servo fans

Per il collegamento è sufficiente interrompere uno qualsiasi dei 3 fili in quanto si tratta di una ventola monofase a 400 V



For connection just discontinue any of the 3 wires as the fan is a single-phase 400V

Taglia motore Motor Size	CS [mm]					KIT CS [mm]					Portata aria Air flow rate [m3/min] 50/60Hz	
	Codice Neri Code Neri	A	B	C	D	Codice Neri Code Neri	A	B	C	D		E
56	KS56SW01	110	90	38	5	KS56SW03	110	90	37	5	99.5	1,2/1,5
63	KS63SW01	123	102	38	6	KS63SW03	123	115	51	8	104	2,6/3,1
71	KS71SW02	138	95	35	6	KS71SW04	138	115	59	6	112	2,6/3,1
80	KS80SW03	156	115	55	10	KS80SW09	156	130	69	10	120.5	3,3/3,7
90S	KS90SW04	176	100	33	10	KS90SW09	176	140	72	6	131	5,2/5,9
90L	KS90SW04	176	100	33	10	KS90SW09	176	140	72	6	131	5,2/5,9
100	KS10SW01	195	125	53	10	KS10SW06	195	155	89	6	140	5,2/5,9
112	KS11SW01	220	120	50	10	KS11SW08	220	175	98	15	151.5	5,2/5,9
132S	KS13SW01	258	220	109	10	KS13SW04	258	220	109	10	171	15,9/14,2
132M	KS13SW01	258	220	109	10	KS13SW04	258	220	109	10	171	15,9/14,2
160M	KS16SW01	315	270	155	15	KS16SW03	315	270	155	15	196.5	15,9/14,2
160L	KS16SW01	315	270	155	15	KS16SW03	315	270	155	15	196.5	15,9/14,2
180	KS18SW01	350	350	205	75	KS18SW03	350	350	205	25	215.5	28,3/29,7
200	KS20SW01	350	350	155	25	KS20SW03	350	350	155	25	215.5	28,3/29,7

Taglia motore Motor Size	CS					KIT CS					Portata aria Air flow rate [m3/min] 50/60Hz		
	Codice Neri Code Neri	A	B	C	D	E	Codice Neri Code Neri	A	B	C		D	E
56	KS56SW04	110	90	37	5	92	KS56SW02	110	90	37	5	92	0,8/0,9
63	KS63SW07	123	102	40	6	100	KS63SW06	123	115	51	8	100	2,6/3,0
71	KS71SW07	138	95	33	4.5	106	KS71SW06	138	115	54	6	106	2,6/3,0
80	KS80SW14	156	115	32	10	117	KS80SW13	156	130	57	5	117	5,2/5,9
90S	KS90SW12	176	100	34	6	129.5	KS90SW11	176	140	86	6	129.5	9,6/11,6
90L	KS90SW12	176	100	34	6	129.5	KS90SW11	176	140	86	6	129.5	9,6/11,6
100	KS10SW08	195	125	39	5	139	KS10SW05	195	155	94	10	139	9,6/11,6
112	KS11SW07	220	120	38	15	151	KS11SW05	220	175	115	10	151	9,6/11,6
132S	KS13SW03	258	220	120	10	172	KS13SW05	258	220	120	10	172	15,9/17,8
132M	KS13SW03	258	220	120	10	172	KS13SW05	258	220	120	10	172	15,9/17,8
160M	KS16SW02	315	270	160	15	203	KS16SW04	315	270	160	15	203	15,9/17,8
160L	KS16SW02	315	270	160	15	203	KS16SW04	315	270	160	15	203	15,9/17,8
180	KS18SW02	350	350	185	25	216.5	KS18SW04	350	350	230	25	216.5	15,9/17,8
200	KS20SW02	350	350	185	25	216.5	KS20SW04	350	350	185	25	216.5	15,9/17,8